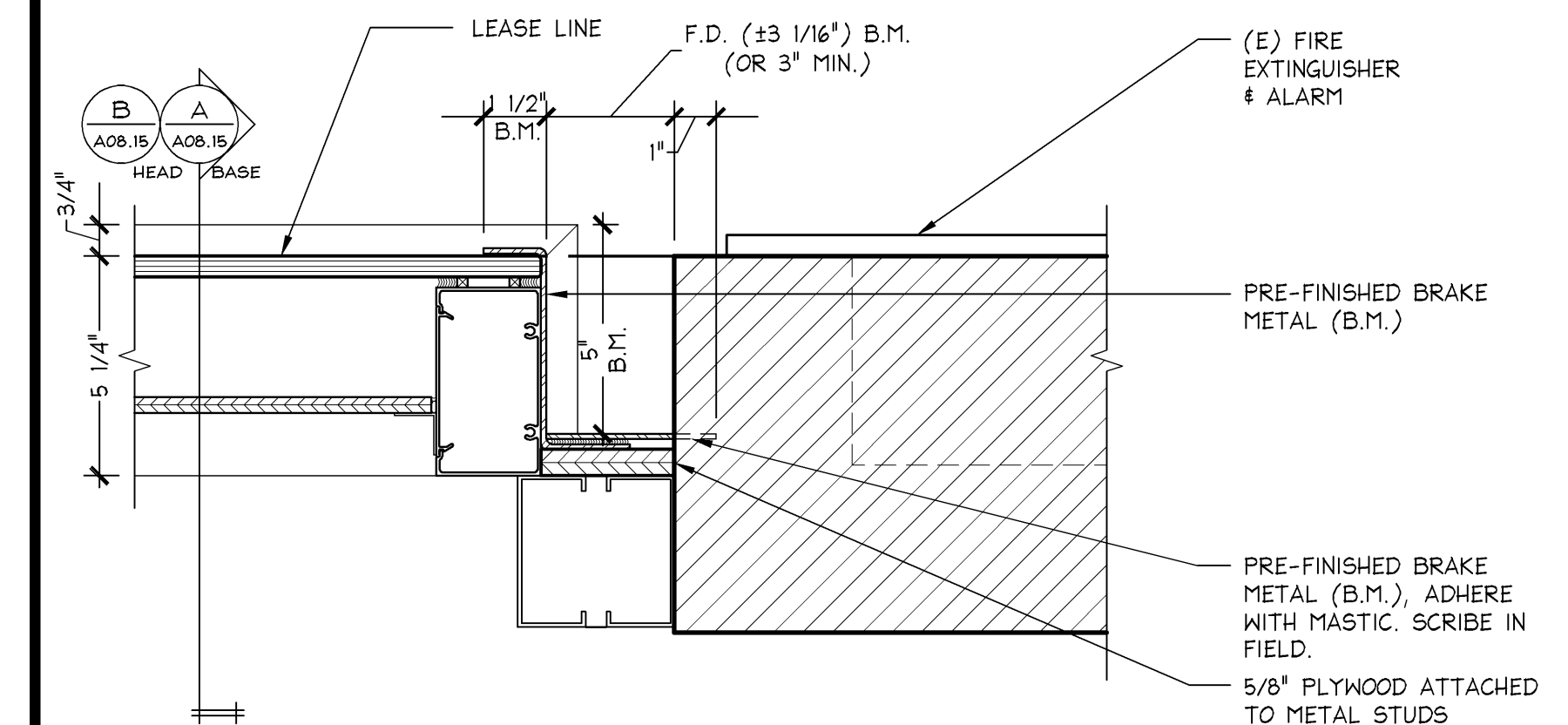


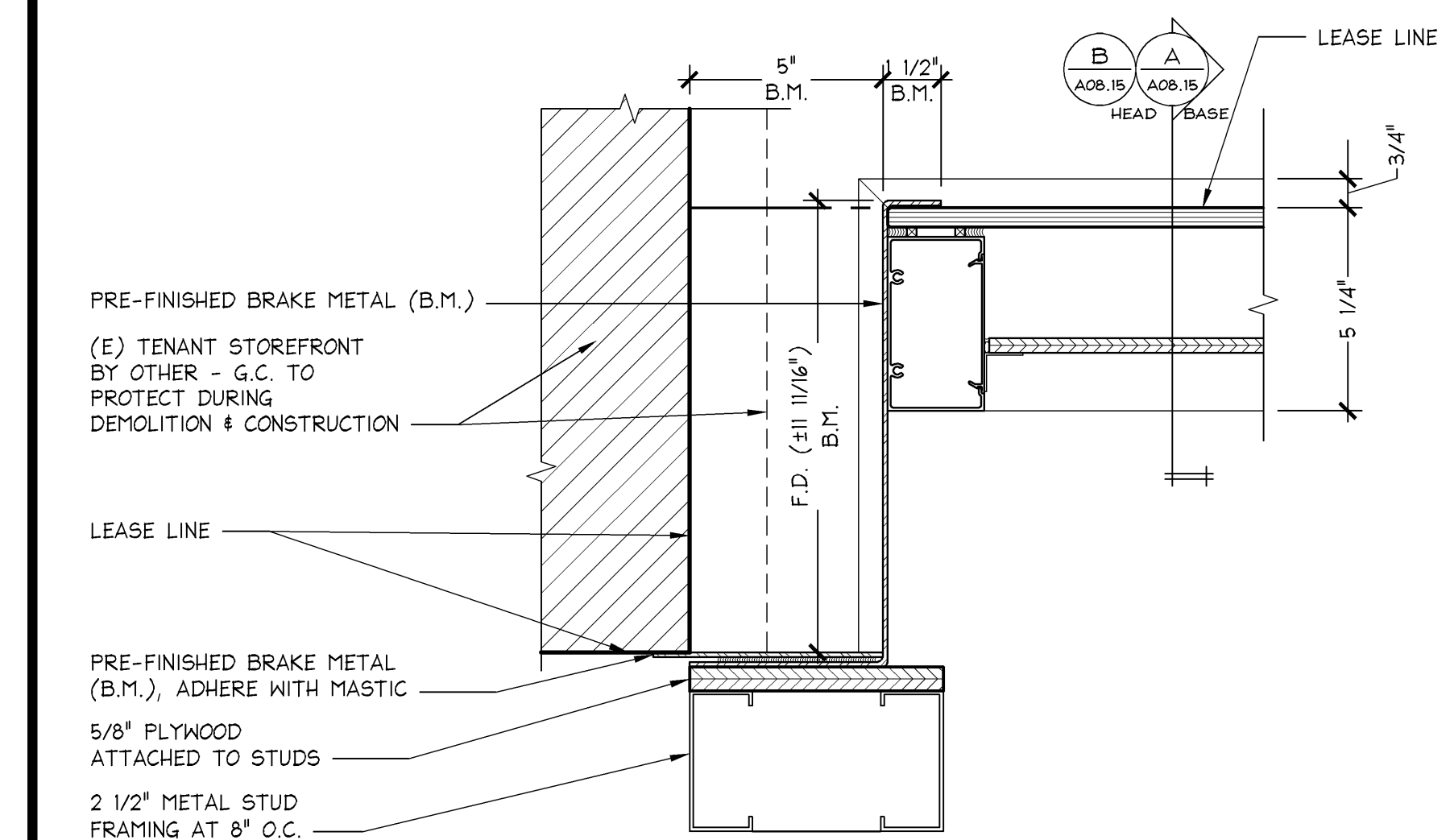
Limited brands

LIMITED STORE PLANNING, INC.  
d/b/a STORE DESIGN & CONSTRUCTION  
Three Limited Parkway • Columbus, Ohio 43230  
Telephone: 614.415.7000 • Fax: 614.415.7349

restrictions on these configurations were necessary for use in a specific site. The authors of the study noted that the use of the same configuration for all anthropomorphism was not their goal. They are not intended to be used on a different anthropomorphism than the one for which they were designed. The authors noted that the use of the same configuration for all anthropomorphism was not their goal. They are not intended to be used on a different anthropomorphism than the one for which they were designed. The authors noted that the use of the same configuration for all anthropomorphism was not their goal. They are not intended to be used on a different anthropomorphism than the one for which they were designed.

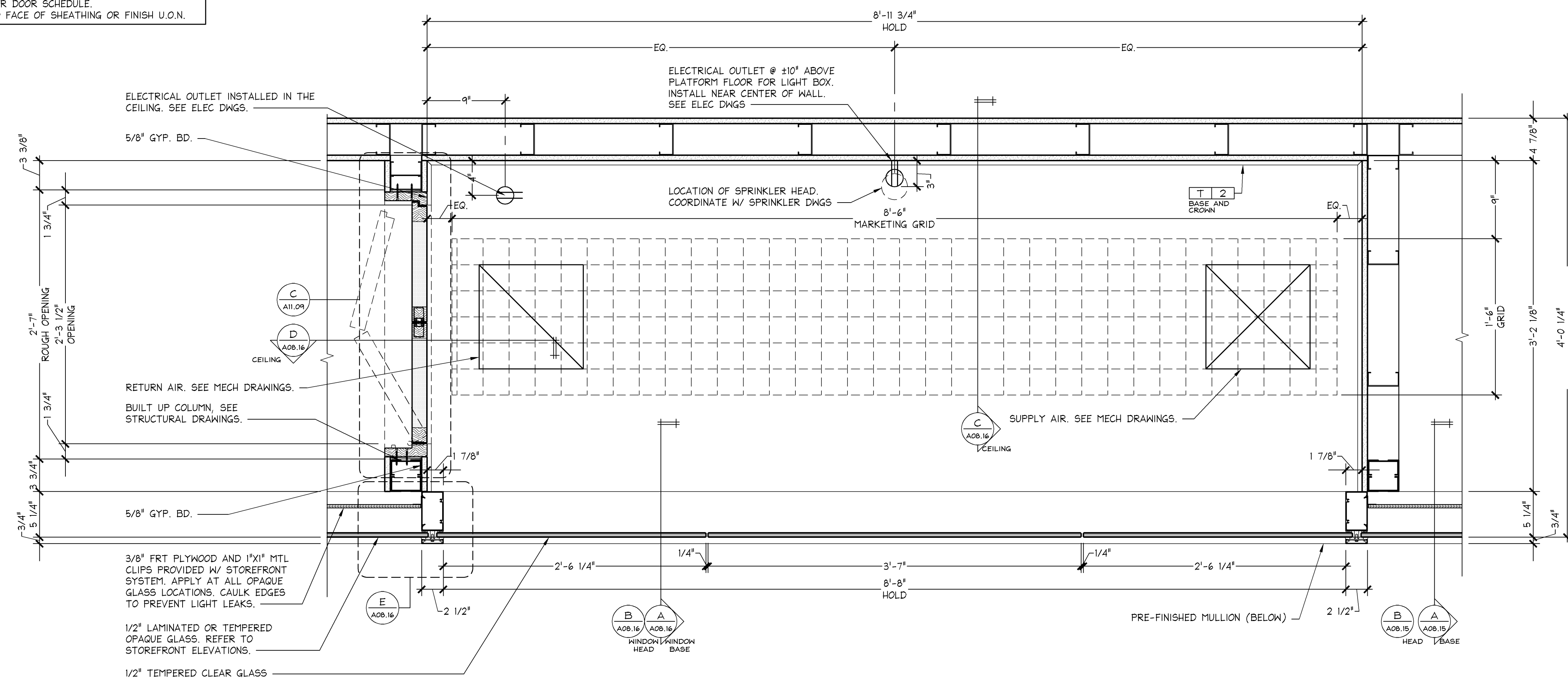


D



C

- NOTES:
1. SEE STRUCTURAL DRAWINGS FOR FRAMING SIZE, GAUGE, AND ASSEMBLY OF ALL STOREFRONT FRAMING.
  2. SEE DETAIL J/A1.01 FOR ALL VSS WOOD TRIM PROFILES.
  3. SEE DETAIL J/A1.01 FOR ALL PINK WOOD TRIM PROFILES.
  4. SEE DETAIL A/A00.02 FOR DOOR SCHEDULE.
  5. ALL DIMENSIONS ARE TO FACE OF SHEATHING OR FINISH U.O.N



A

**PROJECT INFORMATION:**

**VICTORIA'S SECRET**  
**PARK PLAZA MALL**  
6000 W. MARKHAM STREET

2205

FULL REMODEL  
NMA  
00059784

PGK 2  
(141Fa)  
140153

DATE ISSUED: 05/23/2014  
DESIGNED BY: LC  
DRAWN BY: LMR  
CHECKED BY: JRM

## STOREFRONT DETAILS

DRAWING NUMBER:

A08.06